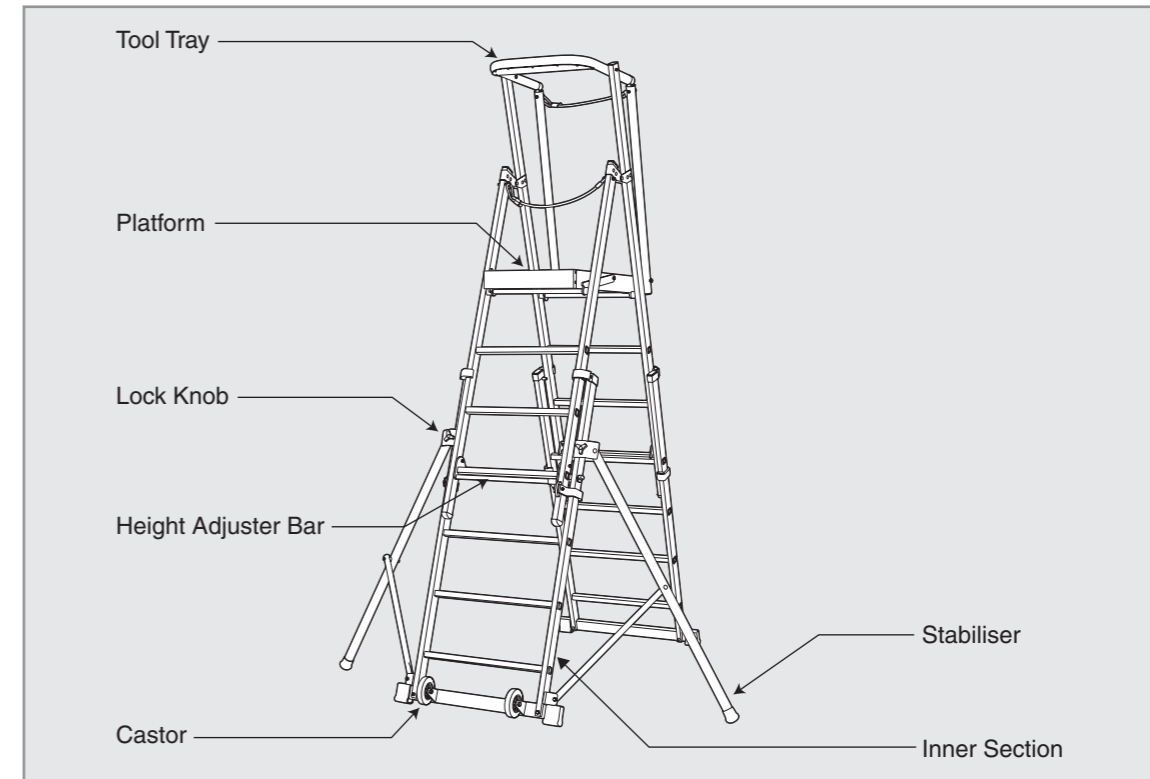


### Thank you for choosing the Zarges Z600 Aluminium Work Platform

Before using this equipment and to avoid personal injury, carefully read and understand these instructions. If there is anything you do not understand, DO NOT use this equipment, contact your supplier for advice.

Certain information in these instructions are governed by law and are subject to change without prior notice. Great care has been taken to ensure that the information is correct at the time of publication. However, it is the user's sole responsibility to ensure that they fully comply with all legal requirements. Zarges UK Ltd will not accept liability for any inaccuracy or incorrectly stated legal requirements

Regular inspection, servicing and periodic maintenance will ensure many years of trouble free operation.



### OVERVIEW

The Z600 Aluminium Work Platform is a perfect alternative to a step ladder in line with the Work at Height Regulations that came into force in 2004.

Stabilisers prevent the unit from toppling, creating a very stable work platform.

The height of the platform can be adjusted rung by rung, a design that works well on a stairway.

### GENERAL SAFETY

This equipment must not be erected, used or dismantled by persons who are under the influence of alcohol or drugs. Do not use this equipment if you are tired or unwell.

You MUST perform a risk assessment before using this equipment to ensure your safety and the safety of others.

Wear the correct Personal Protective Equipment for the task ahead.

Wear gloves when handling this equipment. Steel toecap boots must be worn. If appropriate, wear a hard hat.

Do not wear loose jewellery or clothing that may get in the way or become trapped in the equipment. Tie back long hair.

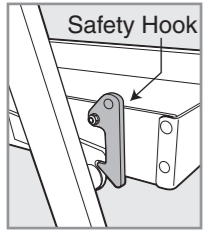
Carefully inspect the Platform Steps before use, if there is any doubt about its condition, DO NOT USE IT.

Do not use this equipment where there are overhead power lines or similar hazards. Only use this equipment if you are comfortable working at heights.

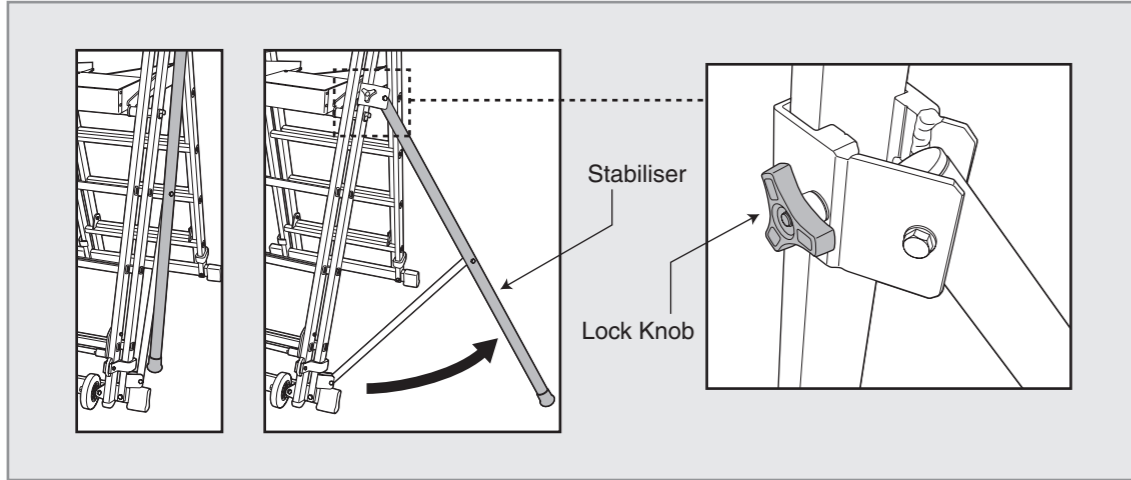
Do not lean from the Platform Steps and never apply a lot of side force.

These Platform Steps MUST NOT be used when working with electricity. If using the platform Steps on a stairway, you must ensure that the platform remains level once the extensions are deployed. Do not raise the steps by placing blocks underneath.

## SETTING UP



Wheel the Z600 Platform Steps to the work location and bring upright.  
Open out the steps until the platform is fully lowered and the safety hook has engaged.  
Next, deploy one of the stabilisers.  
Loosen the lock knob then lower the stabiliser until its foot is in contact with the ground then tighten the lock knob securely.  
Repeat this operation with the remaining stabiliser.



**DO NOT set the stabilisers so that they raise the steps off the ground. The stabilisers are NOT designed to carry any weight.**

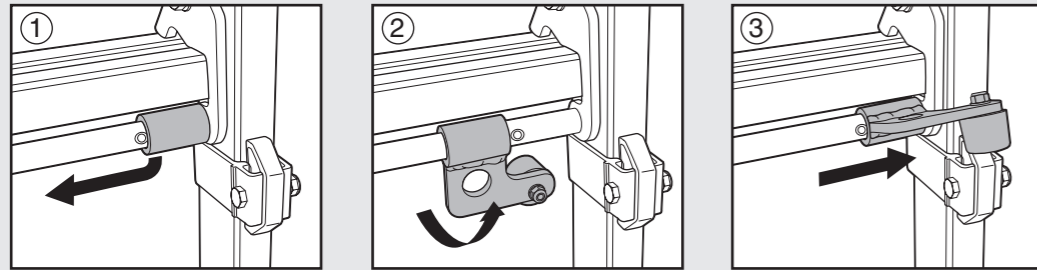
## ADJUSTING THE HEIGHT

The Z600 is fitted with extending ladder sections positioned on the inside of the main sections. The inner sections can be lowered to increase the working height of the unit.

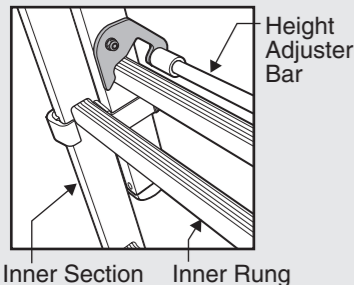
To ensure maximum safety, the height adjuster is retained by a simple locking system which prevents accidental adjustment.

Facing the steps from one end, move the red adjuster lock as follows.

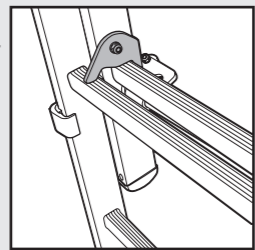
### Red Adjuster Lock



### Hook – Disengaged



### Hook – Engaged



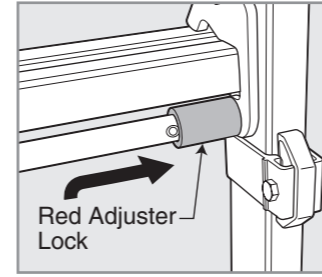
Move it to the left, then back, then to the right (see illustration). It must sit fully to the right when adjusting height.

The height adjuster bar must be raised to disengage the hooks and allow the inner section to be lowered.  
Place your foot on the lower rung of the inner section to stop it from rising.

Take a firm hold of both the adjuster bar and the rung and lift.

Continue to lift until the hooks pass the next rung of the inner section.

Once passed the next rung, release the height adjuster bar so that the hooks swing out, then lower until the hooks rest on the inner section's rung.



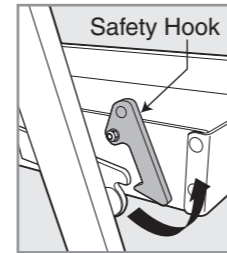
Only raise the unit by one rung per side at a time, to avoid the Z600 becoming unstable.

If using the Z600 on level ground, repeat with the other side of the unit until the required height is achieved.

When using the Z600 on a stairway adjust the height of both sides to bring the platform level.

After adjustments have been completed, **DO NOT** access the Z600 until you have reengaged both red adjuster lock bars.

## WHEN YOU HAVE FINISHED



To pack the Z600 away after use, firstly clear the platform and tool tray of all remaining items.

Adjust the unit to its lowest height and ensure that you have reengaged both red adjuster lock bars.

Next, release the lock knob and fold each stabiliser into the stowed position, relocking the knob to retain it in place.

Finally, raise the platform safety hook clear then close the two upper sections together.

## ASCENDING THE PLATFORM STEPS

Never exceed the Platform Steps SWL, (the combined weight of the user and tools).

Your feet must always be positioned in the middle of the rung. Once standing on the platform, attach the guard rope hook to the anchorage point.

## MOVING THE PLATFORM STEPS

The Platform Steps can be moved when open or closed. If moving when open, close the stabilisers first to prevent an accident.

When moving either open or closed, simply lean the unit back so that the base wheels are in contact with the floor.

